

MILITARY
BALLISTIC
PROTECTIVE
HARD ARMOUR
PLATES



STRIKE FACE



LEVEL III

MODEL BPHA-P1-L3



LEVEL III+

MODEL BPHA-P2-L3P



LEVEL III++

MODEL BPHA-P3-L3PP



LEVEL IV ALUMINA

MODEL BPHA-P4-L4A



LEVEL IV SILICIUM CARBIDE

MODEL BPHA-P5-L4SC



LEVEL IV SILICIUM CARBIDE - SAPI

MODEL BPHA-P6-L4SCS



LEVEL III BPHA-P1-L3



LEVEL OF PROTECTION III

BPHA-P1-L3 is designed to withstand multiple hits with a 7.62x51 mm FMJ NATO ball ammunition. It is lightweight and **made of 100% polyethylene**. It can be used In Conjunction With (ICW) Soft Armour Panels or Optional Stand Alone (SA).

STANDARD CUT



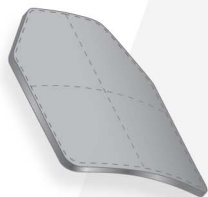
150x200 mm



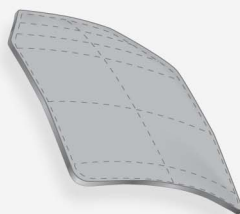
250x300 mm

CURVATURE

Single curve



Multi-curve



OUTER SHELL

POLYUREA COLOR



POSITION



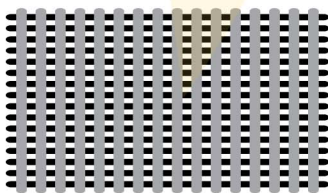
LEFT/RIGHT
150x200 mm



FRONT/BACK
ARMOUR PLATE

MATERIAL

Composite



CORDURA FABRIC



NIJ STANDARD



WEIGHT

WEIGHT - ICW

From 0.95 kg +/-100gr
Optional 1.1 kg +/-100gr

WEIGHT - STAND ALONE

1.3 kg +/-100gr

CALIBER PROTECTION

- ✓ .038
- ✓ .22 LR
- ✓ .40
- ✓ 9 mm
- ✓ 10 mm
- ✓ .45
- ✓ .38
- ✓ 5.7 x 28 mm
- ✓ .357
- ✓ .30
- ✓ .300
- ✓ 7.62 x 51 mm (M80)

LEVEL III+ BPHA-P2-L3P



LEVEL OF PROTECTION III+

BPHA-P2-L3+ is designed to withstand multiple hits with 7.62x51 mm FMJ NATO ball and 7.62x39 mm MSC ammunition. It is lightweight and **made of 100% polyethylene**. It can be used In Conjunction With (ICW) Soft Armour Panels or Optional Stand Alone (SA).

STANDARD CUT



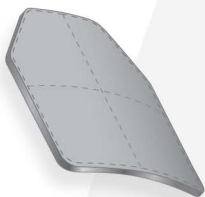
150x200 mm



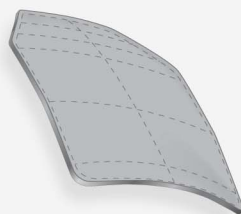
250x300 mm

CURVATURE

Single curve



Multi-curve



OUTER SHELL

POLYUREA COLOR



POSITION



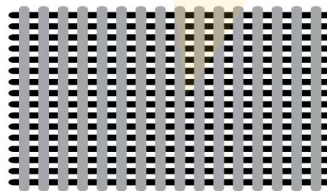
LEFT/RIGHT
150x200 mm



FRONT/BACK
ARMOUR PLATE

MATERIAL

Composite



CORDURA FABRIC



NIJ STANDARD



WEIGHT

WEIGHT - ICW
From 1.2 kg +/-100gr

WEIGHT - STAND ALONE
1.4 kg +/-100gr

CALIBER PROTECTION

- ✓ .038
- ✓ .22 LR
- ✓ .40
- ✓ 9 mm
- ✓ 10 mm
- ✓ .45
- ✓ .38
- ✓ 5.7 x 28 mm
- ✓ .357
- ✓ .30
- ✓ .300
- ✓ 7.62 x 39 mm (MSC)
- ✓ 7.62 x 51 mm (M80)

LEVEL III ++

BPHA-P3-L3PP



LEVEL OF PROTECTION III++

BPHA-P3-L3++ is designed to withstand multiple hits with a 7.62x51 mm FMJ NATO ball and 7.62x39 mm MSC ammunition and 5.56x45 mm SS-109. **Made of polyethylene and ceramic**, it can be used In Conjunction With (ICW) Soft Armour Panels or Optional Stand Alone (SA).

STANDARD CUT



150x200 mm

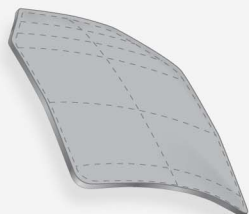


250x300 mm

CURVATURE

Single curve

Multi-curve



OUTER SHELL

POLYUREA COLOR



POSITION



FRONT/BACK
ARMOUR PLATE



LEFT/RIGHT
150x200 mm

MATERIAL

Composite



CORDURA FABRIC



NIJ STANDARD



WEIGHT

WEIGHT - ICW
From 1.65 kg +/-100gr

WEIGHT - STAND ALONE
1.85 kg +/-100gr

CALIBER PROTECTION

- ✓ .038
- ✓ .22 LR
- ✓ .40
- ✓ 9 mm
- ✓ 10 mm
- ✓ .45
- ✓ .38
- ✓ 5.7 x 28 mm
- ✓ .357
- ✓ 5.56 x 45 mm (SS109)
- ✓ 7.62 x 39 mm (MSC)
- ✓ 7.62 x 51 mm (M80)

LEVEL IV ALUMINA

BPHA-P4-L4A



LEVEL OF PROTECTION IV

BPHA-P4-L4A ICW is designed to provide protection against the Armour-Piercing (AP) bullets 7.62x39 mm MSC ammunition, 7.62x51 mm FMJ NATO ball, 7.62x54R mm B32, 7.62x63 mm AP M2.

Made of alumina, polyethylene and aramid.

STANDARD CUT



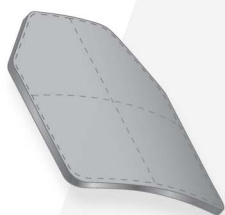
150x200 mm



250x300 mm

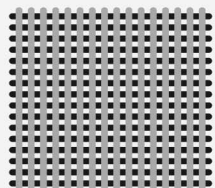
CURVATURE

Single curve



MATERIAL

Composite



POSITION



FRONT/BACK
ARMOUR PLATE



LEFT/RIGHT
150x200 mm

WEIGHT

WEIGHT - ICW
From 3.2 kg +/-100gr

OUTER SHELL

POLYUREA COLOR



CORDURA FABRIC



NIJ STANDARD



CALIBER PROTECTION

- ✓ .038
- ✓ .22 LR
- ✓ .40
- ✓ 9 mm
- ✓ 10 mm
- ✓ .45
- ✓ .38
- ✓ 5.7 x 28 mm
- ✓ .357
- ✓ .30
- ✓ .300
- ✓ 5.56 x 45 mm (SS109)
- ✓ 7.62 x 51 mm (M80)
- ✓ 7.62 x 54 mm LPS
- ✓ 7.62 x 39 mm MSC
- ✓ 7.62 x 63 mm AP M2

LEVEL IV SILICIUM CARBIDE BPHA-P5-L4SC



LEVEL OF PROTECTION IV

BPHA-P5-L4SC Stand Alone (SA) and ICW is designed to provide protection against the Armour-Piercing (AP) bullets 7.62x39 mm MSC ammunition, 7.62x51 mm FMJ NATO ball, 7.62x54 mm LPS, 7.62x54 mm AP, 7.62x63 mm AP M2. **Made of ceramic, polyethylene and aramid.**

STANDARD CUT



150x200 mm



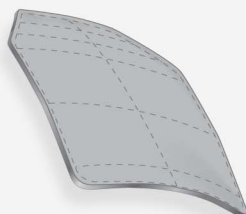
250x300 mm

CURVATURE

Single curve



Multi-curve



OUTER SHELL

POLYUREA
COLOR



CORDURA
COLOR



WEIGHT

WEIGHT - ICW
From 2.3 kg +/-100gr

WEIGHT - STAND ALONE
2.5 kg +/-100gr

POSITION



FRONT/BACK
ARMOUR PLATE



LEFT/RIGHT
150x200 mm

MATERIAL

Composite



NIJ STANDARD



CALIBER PROTECTION

- ✓ .038
- ✓ .22 LR
- ✓ .40
- ✓ 9 mm
- ✓ 10 mm
- ✓ .45
- ✓ .38
- ✓ 5.7 x 28 mm
- ✓ .357
- ✓ .30
- ✓ .300
- ✓ 5.56 x 45 mm (SS109)
- ✓ 7.62 x 51 mm (M80)
- ✓ 7.62 x 54 mm LPS
- ✓ 7.62 x 39 mm MSC
- ✓ 7.62 x 54 mm API
- ✓ 7.62 x 63 mm AP M2

LEVEL IV SILICIUM CARBIDE - SAPI

BPHA-P6-L4SCS



LEVEL OF PROTECTION IV

BPHA-P6-L4SCS Stand Alone (SA) and ICW is designed to provide protection against the Armour-Piercing (AP) bullets 7.62x39 mm MSC ammunition, 7.62x51 mm FMJ NATO ball, 7.62x54 mm LPS, 7.62x54 mm AP, 7.62x63 mm AP M2. **Made of ceramic, polyethylene and aramid.**

WEIGHT

WEIGHT - ICW

S 1.95 kg +/-100gr
M 2.19 kg +/-100gr
L 2.49 kg +/-100gr
XL 2.86 kg +/-100gr

WEIGHT STAND ALONE

S 2.1 kg +/-100gr
M 2.39 kg +/-100gr
L 2.74 kg +/-100gr
XL 3.16 kg +/-100gr

SAPI/ESAPI CUT



210x298 mm



240x318 mm



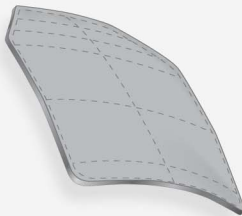
260x337 mm



290x365 mm

CURVATURE

Multi-curve



OUTER SHELL

POLYUREA
COLOR



CORDURA
COLOR



POSITION



FRONT/BACK
ARMOUR PLATE



LEFT/RIGHT
150x200 mm

MATERIAL

Composite



NIJ STANDARD



CALIBER PROTECTION

- ✓ .038
- ✓ .22 LR
- ✓ .40
- ✓ 9 mm
- ✓ 10 mm
- ✓ .45
- ✓ .38
- ✓ 5.7 x 28 mm
- ✓ .357
- ✓ .30
- ✓ .300
- ✓ 5.56 x 45 mm (SS109)
- ✓ 7.62 x 51 mm (M80)
- ✓ 7.62 x 54 mm LPS
- ✓ 7.62 x 39 mm MSC
- ✓ 7.62 x 54 mm API
- ✓ 7.62 x 63 mm AP M2



ADVANCED MILITARY SUPPLIES SOLUTIONS

MiLSA™ Military Supplies Agency, LLP

sales@milsa.com.tr www.milsa.com.tr

Istanbul Office

Exen Residence No: 24-333
34764 Umraniye, Istanbul
TÜRKİYE

istanbul@milsa.com.tr

Izmir Office

Inonu Caddesi No: 482-25
35290 Konak, Izmir
TÜRKİYE

izmir@milsa.com.tr

Ankara Office

Tuna Caddesi No: 18-5
06420 Cankaya, Ankara
TÜRKİYE

ankara@milsa.com.tr

Arms Workshop

Eregli Caddesi No:46D
42020 Karatay, Konya
TÜRKİYE

workshop@milsa.com.tr

